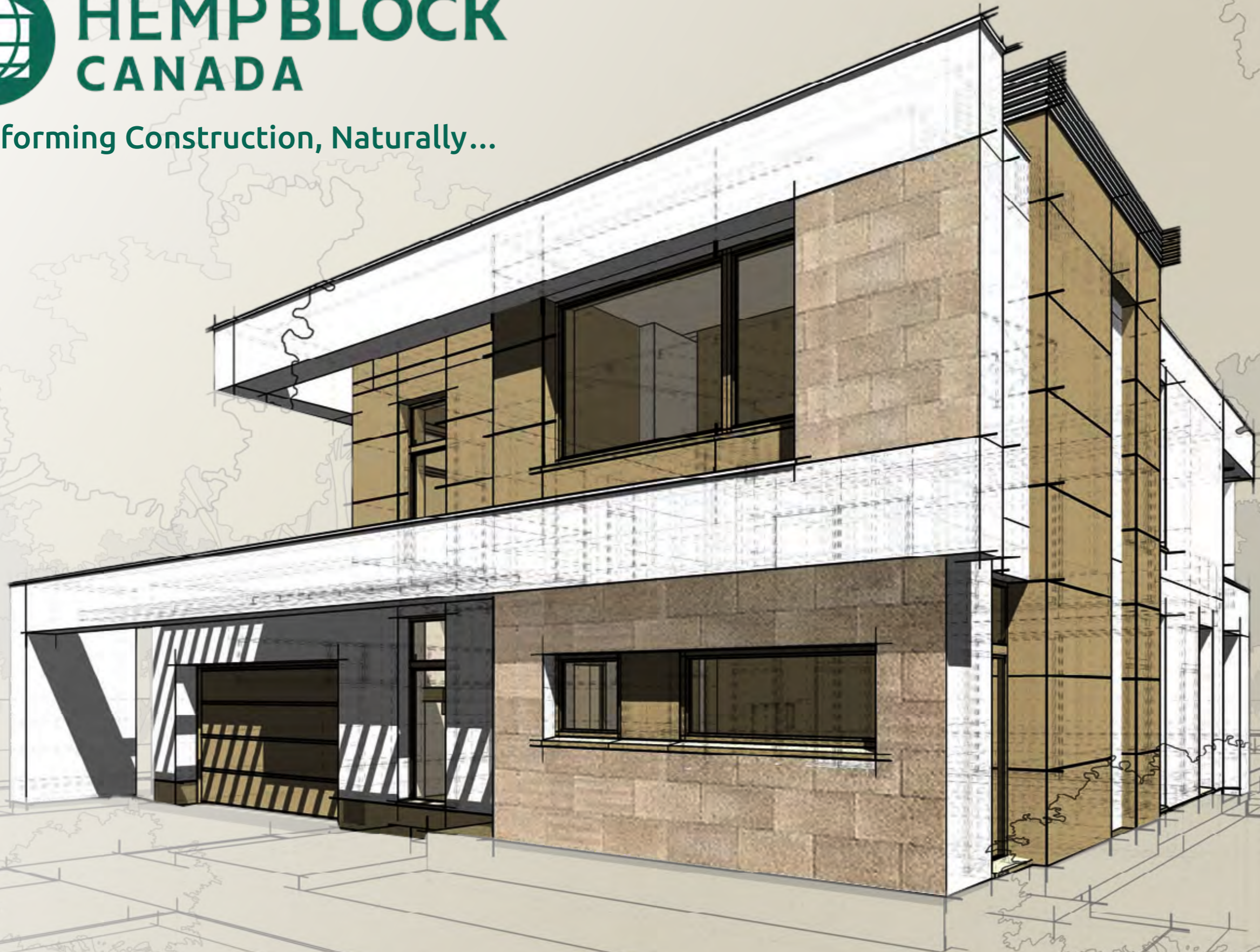




HEMP BLOCK CANADA

Transforming Construction, Naturally...




HEMPBLOCKS WALLING SYSTEMS: A SUPERIOR SOLUTION



Setting a new standard of excellence that is unmatched by any other product.



Load Bearing



Fast & Easy Assembly



Termite Resistant



Mould Resistant



Fire Resistant



Carbon Negative



Excellent Thermal Insulation



Energy Efficient



All Natural



HEMPBLOCK - TESTED & CERTIFIED

Hemp Blocks included
in the **International
Residential Code (USA)**

APPENDIX BL HEMP LIME
HEMPCRETE CONSTRUCTION - 2024
INTERNATIONAL RESIDENTIAL CODE
(IRC)

codes.iccsafe.org



The European Product
Certification Equivalents are
Recognised Through IAF &
ILAC International Multilateral
Recognition Agreements.
France and Canada are
Full Members of These
International Bodies.



HEMPBLOCK TECHNOLOGY COMPARED TO TRADITIONAL BUILDING MATERIALS

HempBLOCKs - The Math is Simple...

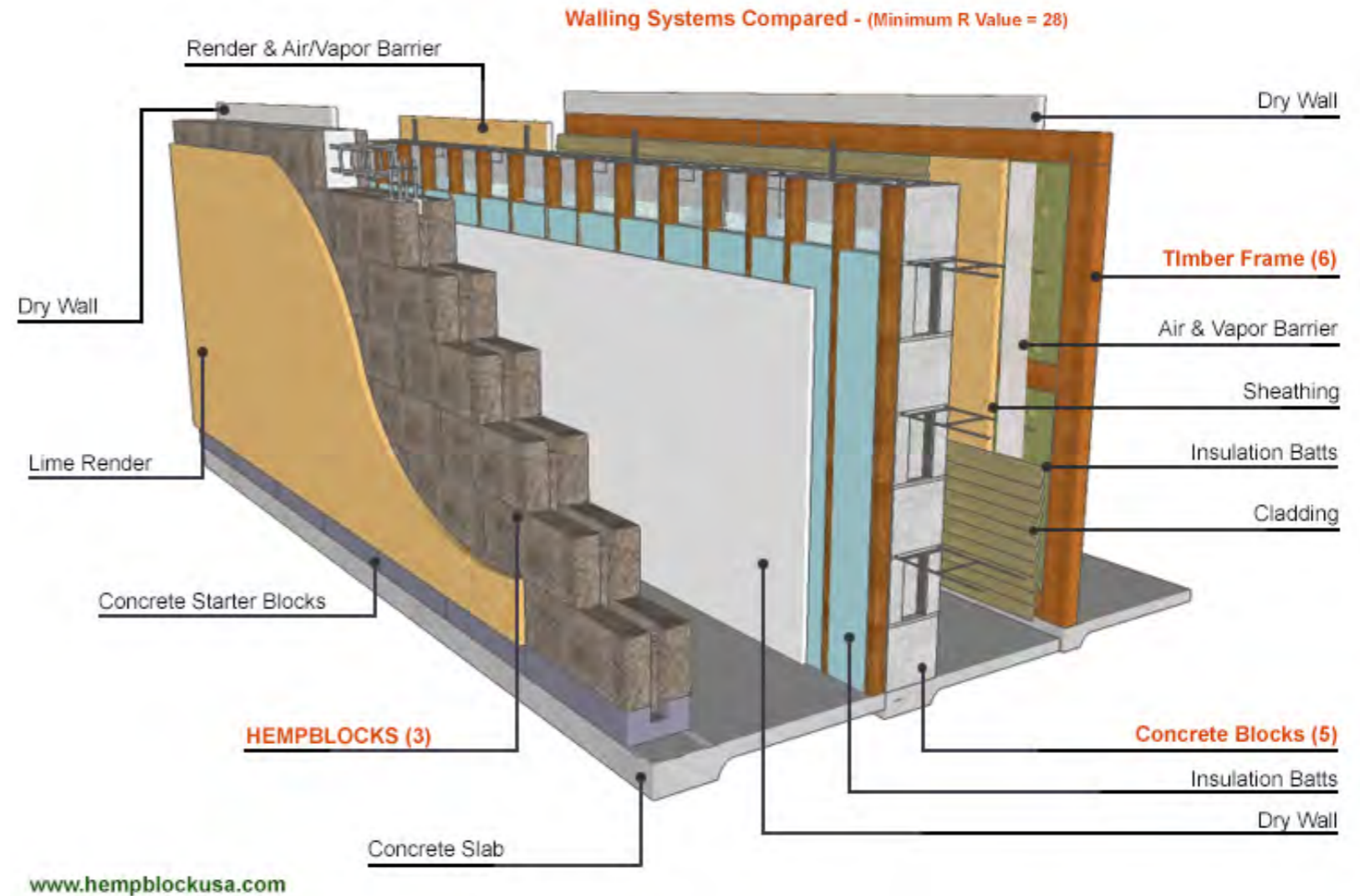
Less Materials,
Labor, Climate
Control & CO₂

=

**SUPERIOR
OUTCOME**

NO NEED FOR ADDITIONAL:

- Wall Insulation
- Sound Dampening
- Heating and Cooling
- Pest or Mould Control
- Fire Protection



Easily integrated into existing building practices



HEMPBLOCK WALLING SYSTEMS

Structural Options for the LB 300 Dry-Stacked Interlocking HEMPBLOCKS

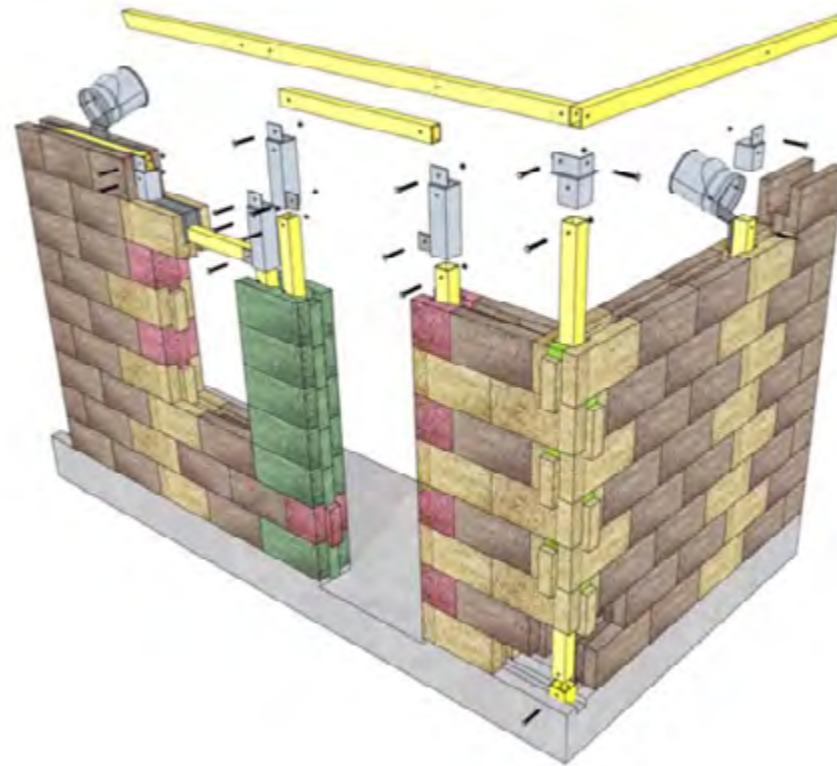
HempBLOCKs arrive on-site ready to use just like any block or brick. Interlocking HempBLOCKs:

- Don't require mortar jointing,
- Are installed up to 70% faster than other building materials and
- Our proprietary load-bearing structure is incorporated into the HempBLOCK walling system during construction.

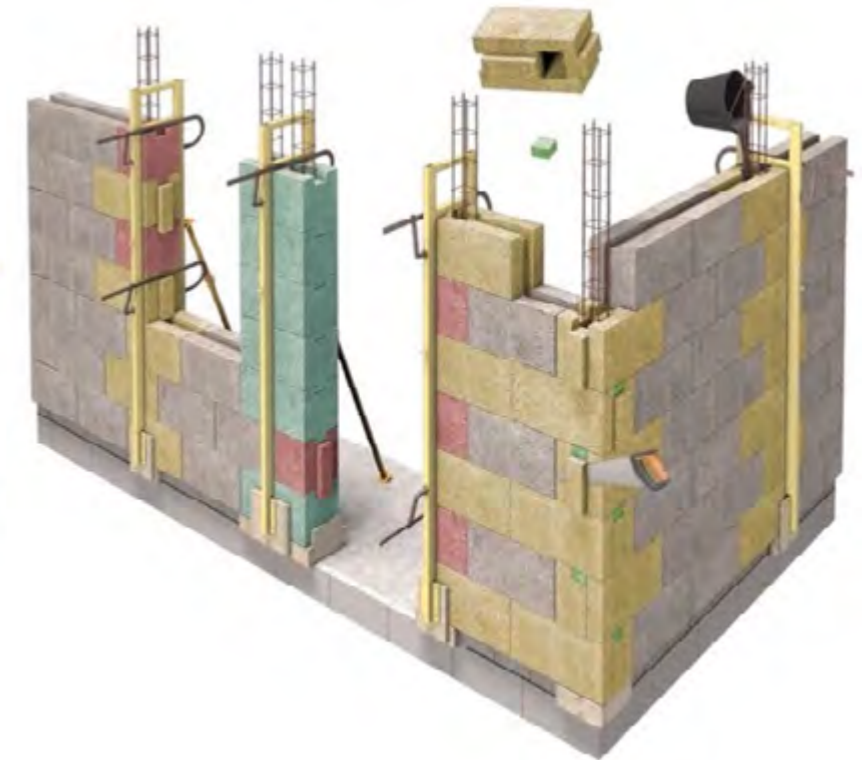
The building system is easily integrated into existing building practices as no additional skills or specialist equipment are required to assemble the HempBLOCK walls.

In fact, it requires more skills to build a brick, concrete block or a timber framed wall.

FRP or Steel - Post and Beam (Our PCT Patent - Preferred Method)



Concrete & Reinforcing Steel (Optional Method)



THE HEMPBLOCK PRODUCTS

FACTORY PRODUCED



SOLID



1 COLUMN



2 COLUMN



LINTEL

LB 300 DRY STACKED INTERLOCKING HEMPBLOCKS



HEMPBLOCK SERVICES & PARTNERS

Our Services



Architectural Design

Our designated team provides an integrated & comprehensive design service.



Engineering Services

Structural engineering design and certification as required.



Builder Training

Training of builders nationally to ensure product & construction integrity.

Our Supply & Support Partners - International and USA



KEY DOCUMENTS - HEMPBLOCK



[CLICK HERE](#)

Full Lifecycle Analysis

Environmental Product Declaration



[CLICK HERE](#)

International Residential Code

2024 Appendix BL - Hempcrete Construction



[CLICK HERE](#)

Performance Data

Technical details & key performance data



[CLICK HERE](#)

Cost and CO₂ Comparisons

HempBLOCK walling system compared to concrete block walling system



[CLICK HERE](#)

Fiber Reinforced Polymers

Composite fiber technology for structural posts and beams



[CLICK HERE](#)

Installation Manual (LB300)

Comprehensive documentation of 3 different HempBLOCK walling methods (metric)



[CLICK HERE](#)

Installation Manual (Solid)

Comprehensive documentation using solid HempBLOCKs for interior walling (metric)



[CLICK HERE](#)

Project Examples

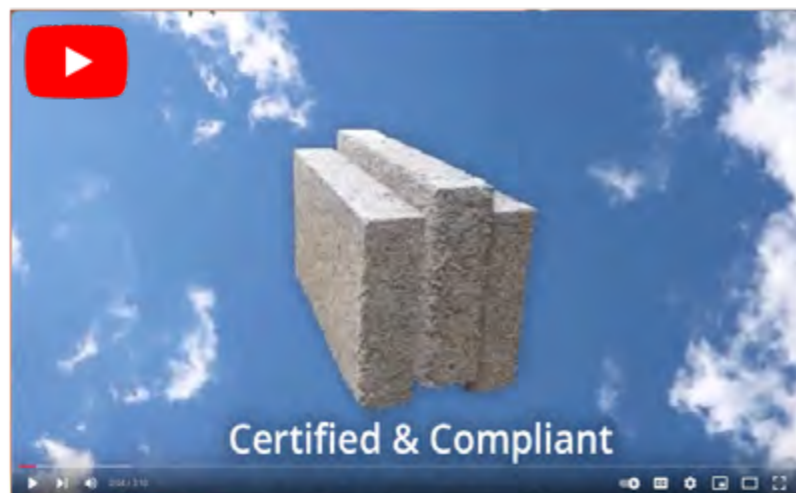
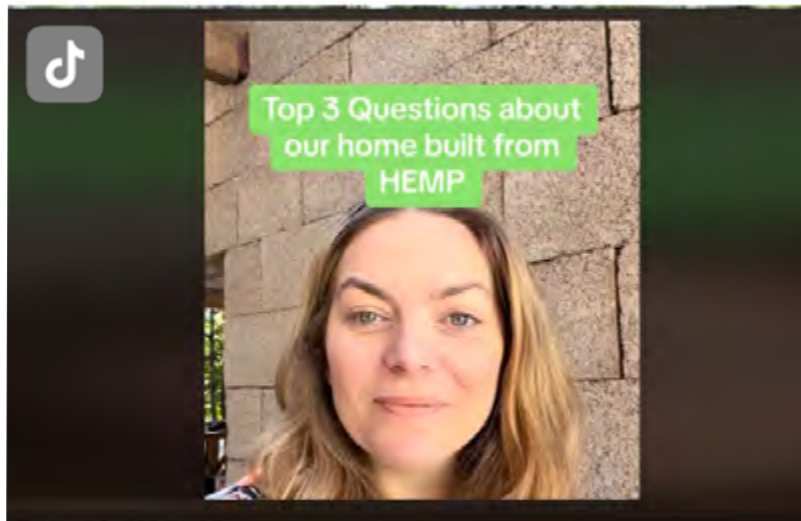
Commercial and residential building projects and training

[Information Channels](#)

[CLICK HERE](#)



VIDEOS - HEMPBLOCK INTERNATIONAL





HEMPBLOCK™
CANADA

Transforming Construction Naturally

www.hempblockcanada.com